

## Cloud Presentation Suite

Cloud Presentation Suite is a PC-based software application capable of displaying real-time information about the current cloud and weather situation using any of our Cloud Ceilometers.

The program presents cloudbases (including penetration depth) and vertical visibility at certain conditions, reports back status of the ceilometer and notifies the user if there is any problem.

By using the client/server technology it is possible to use multiple clients located far away to monitor the status.

The program suite consists of the following programs:

- **Cloud Presentation**  
Client application. Real-time viewing of current conditions
- **Cloud Server**  
Server application. Collects and stores data. Notifies clients whenever new data is available
- **Cloud History**  
Used for browsing through archives, analysing and making reports.

Cloud Presentation Suite is built upon Microsoft's .NET platform and thoroughly tested on Microsoft Windows XP.

The program has been certified for use within the Swedish Defence.

## System requirements

<b>OS</b>	Windows XP Pro/Home Windows 2000 (SP2 or newer recommended) Windows NT 4.0 (SP 6a or later required)
<b>Additional software</b>	.NET Framework version 1.1 or later Internet Explorer 5.01 or later
<b>Hardware</b>	Any modern computer capable of running Windows XP (Minimum Pentium III, 128 MB memory) One free serial interface for each ceilometer to connect (Server)
<b>Free space</b>	30 MB hard disk space for program installation ~ 1.5 MB / day and ceilometer for data storage

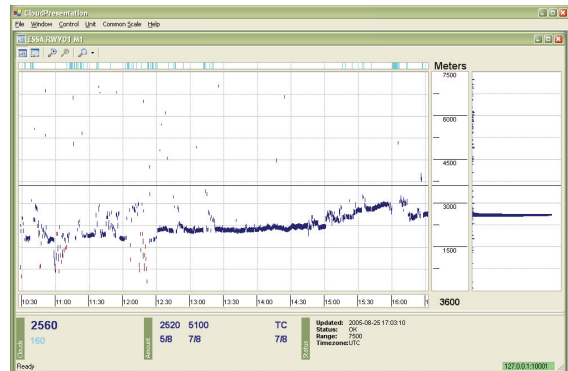
## Ease-of-use

Cloud Presentation Suite is built upon the basic design rules defined for the Microsoft Windows environment and you will feel comfortable using it.

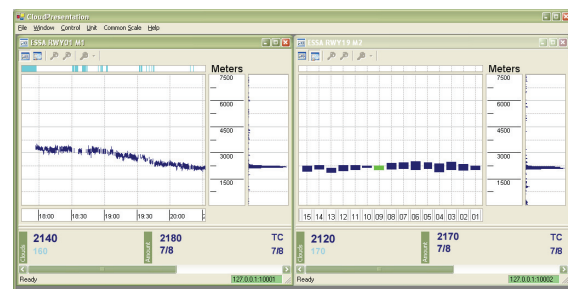
If you still have a problem, a context sensitive built-in help system is included which will guide you through the windows and functions.

Supplied documentation includes:

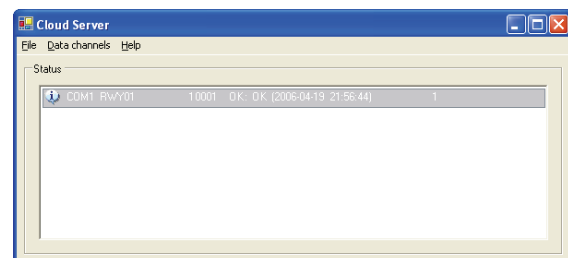
- **User's Guide**  
Includes all information about the program suite; from installation and configuration to daily use and security settings.
- **Quick Start Guide**  
Gets you up and running in no time. A point-by-point instruction on how to make the most basic installations in minutes.



Cloud Presentation — Main view



Cloud Presentation — Multiple connections



Cloud Server — Main view

# Features

## Client/server technology

By using the client/server technology it is possible to have one server computer connected to the ceilometer, and multiple clients that connects over a TCP/IP network to the server. It is possible to either use a Local LAN, or monitor the conditions from the other side of the world using communication over Internet (typically a VPN connection would be established to maintain the security aspect). Please note that it is still possible to run the program suite on a single computer.

## Security settings

It is possible to lock all important settings with a master password. This ensures that a system manager may configure the system, and the daily users will not "break it", by adjusting all settings.

## Sky condition

Sky condition data is calculated and displayed in the programs. Sky condition indicates the amount of the sky that is filled with clouds on different layers.

## Signal Profile (Backscatter data)

For most telegram types it is possible to watch the signal profile (backscatter data) from a measurement. By analyzing this data it is

possible to gain more knowledge of the current conditions, than by only looking at numbers or trends.

## Compatible data storage

Data is stored in standard XML. This means it can be opened and further processed in any program capable of reading/importing XML data, such as Microsoft Excel.

## Printing

Printing is directly supported from within the program.

## Status report ceilometer

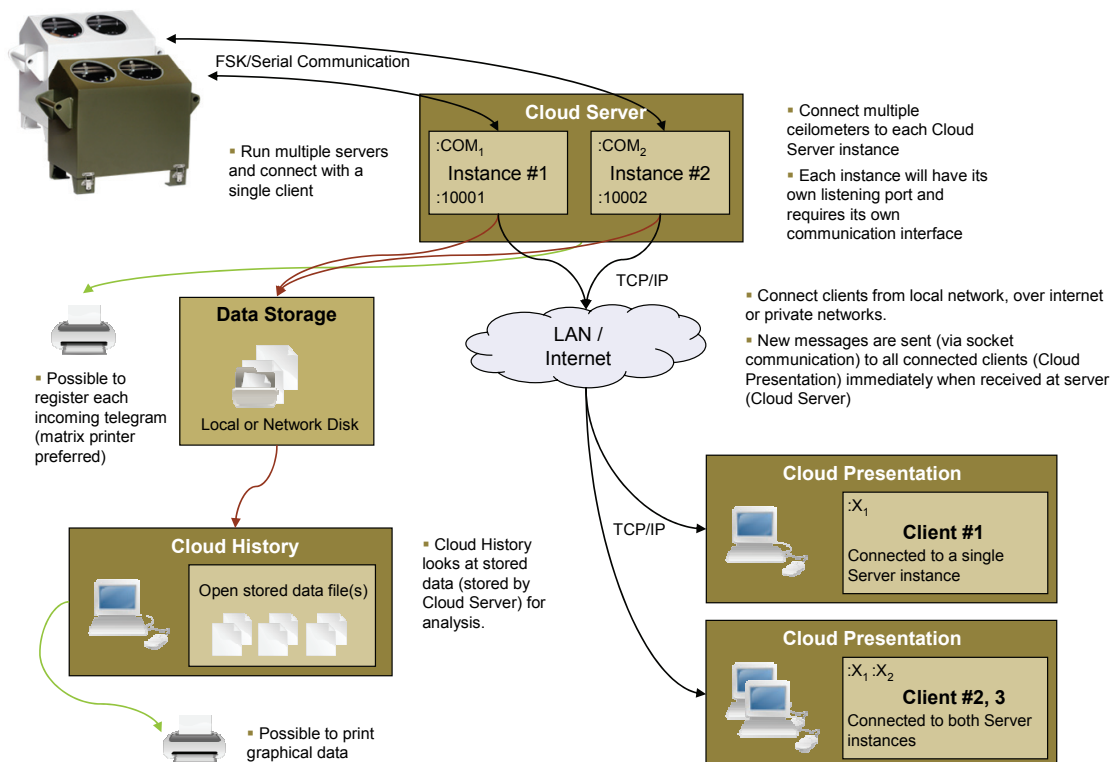
For each measurements the ceilometer also indicates it's status. Whenever there is a problem with the ceilometers functionality etc a status message will appear informing the user about the problem

## Customizable

All major program settings are customizable by the user. This includes security settings, indication colors, type of sky condition data to display, enhancements to perform etc

## Analyze possibilities

Tools to aid in the analyze part includes graphical ruler, detailed view over the most recent measurements, magnify control



Cloud Presentation Suite — Overview